

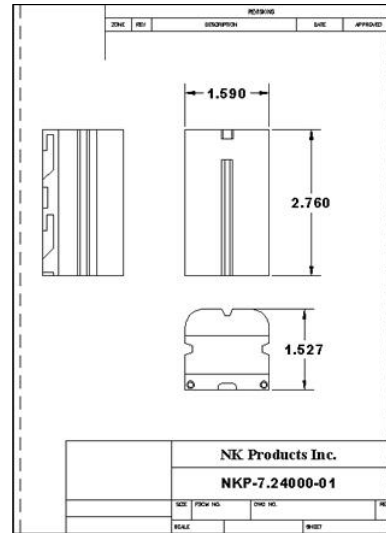
# NKP-7.24000-01 7.2 vdc 26 WattHours

## Battery Specification

### Technical Specifications:

#### Features:

- **High Energy Density**
- **Long Life Cycle**
- **Environmentally Friendly**
- **Low Self Discharge Rate**
- **Long Shelf Life**
- **Light Weight**



#### Recommended Discharge Conditions:

Typical Discharge Voltage .....	10 ~ 6 vdc
End of Discharge Voltage.....	6 vdc
Nominal Operating Voltage .....	7.2 vdc
Nominal Capacity .....	3600mah
Minimum Capacity .....	3000mah
Temperature .....	25C
Maximum Recommended Discharge Current .....	2.0 amps

#### Recommended Charge Conditions:

Recommended Charge Method .....	CC/CV
CC= .5 C Rate CV = 8.4 vdc	
End of Charge Current < 50ma	
Life Cycles > 500 cycles @ 25 C	

#### Operating Temperatures:

Charge .....	0 ~ 35C
Discharge .....	0 ~ 45C
Storage .....	0 ~ 45C

#### Physical Specifications:

Weight .....	6.9 oz
Height .....	2.8 inches
Width .....	1.5 inches
Depth .....	1.53 inches